

Wheeled Excavator

A 904 C
Litronic®

Operating Weight: 41,200 - 46,500 lb
Engine Output: 105 kW / 143 HP
Bucket Capacity: 0.40 - 1.40 yd³



LIEBHERR

A 904 C

Litronic®

Operating Weight: 41,200 - 46,500 lb
Engine Output: 105 kW / 143 HP
Bucket Capacity: 0.40 - 1.40 yd³



Performance

Liebherr wheel excavators have been designed for maximum productivity. Maximum digging performances, high lift capacities and quick working cycles are prerequisite for efficient building site operation, and a wide variety of attachments optimize every excavator application.

Reliability

Liebherr hydraulic excavators have been designed and built to withstand the toughest of conditions at the building site. Their rugged design, high-tensile materials and individual components ensure maximum availability and long life-expectancy.

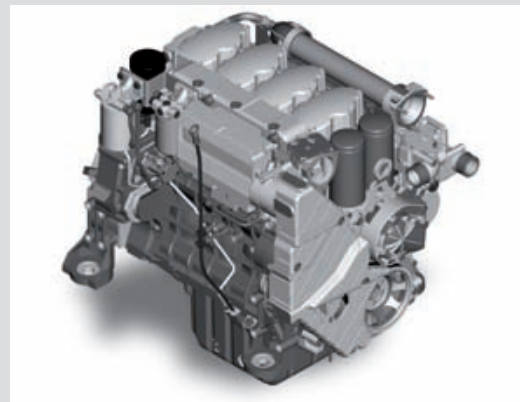
Comfort

Largely dimensioned and ergonomically designed, the Liebherr excavator cab features an operator's seat which can be individually adjusted, as well as clearly arranged control instruments and ideal all-round view. Automatic air-conditioning guarantees an optimum temperature in the Liebherr Feel-Good cab at all times.

Economy

The Liebherr-Litronic-System increases machine performance, reduces fuel consumption and minimises service and maintenance costs. Due to Liebherr's well-balanced range, the ideal machine can always be selected to suit every application.





Liebherr diesel engine

- Long life-expectancy, expansive cylinder capacity and increased weight
- According to level IIIA/Tier 3
- Specially designed for construction machinery operation
- Oil supply even with 100 % tilt angle





Performance

The A 904 C Litronic has been designed for maximum production. Perfectly harmonized, the Liebherr-developed and Liebherr-manufactured components including diesel engine, hydraulic pump and motor, as well as swing gear and cylinders, guarantee maximum performance. Tremendous digging and breakout forces, extensive lifting capacities and quick working and travel movements are thus resulted.

Innovative solutions

Multitude of attachments

Liebherr provide an individual, application-related range of diverse attachments. Hydraulic booms, adjustable both in height and offset positions, as well as standard and offset-adjustable goosenecks, can be combined with different sticks.

Extensive lifting capacities

Canalization and the lifting of pipes are everyday tasks for rubber-tyre excavators. These requirements are endorsed via an intelligent concept of uppercarriage sectioning together with the positioning of the Liebherr engine, mounted at a transversal angle directly in front of the counterweight. Separate hoist cylinder bearing points at the upper end of the basic boom also increase the lifting capacities considerably.

Quick working cycles

High swing torque – attained as a result of the Liebherr swing ring featuring internal teeth and swing drive, specially designed to increase the torque.

Performance without compromise

Maximum performance and maximum forces are available to the operator at all times.

Rugged undercarriage

- Various undercarriage designs featuring welded, durable outriggers allow safe positioning, optimum stability, and long life-expectancy of the machine for every application.
- Prop-up blade / dozing blade in box-type design – only two bearing points for high torsional resistance



Litronic

- Increases productivity of the excavator
- Reduces fuel consumption
- Reduces service costs and eases operation
- Allows maximum sensitivity and as many overlapping movements as are required



Features

- High-tensile steel plates in high-stress areas for the toughest of applications
- Well-thought-out and secure bearings for attachments and cylinders
- Maximum resistance, even when lifting heavy loads



Reliability

Liebherr construction machinery is proven all over the world every day on the most diverse of building sites. Many years of experience as the world's largest manufacturer of rubber-tyre excavators, continuous development and the introduction of the latest technology are evident in every machine, guaranteeing absolute safety during applications. With its rugged design, and featuring Liebherr components, the A 904 C Litronic has been designed for extremely long life-expectancy.

Quality in detail

Liebherr components

Components such as engine, hydraulic cylinders, swing gear and electric parts have been specially designed, tested and manufactured by Liebherr for construction machinery. Parts including engines and pumps for example, are already being synchronized with each other as early as the construction phase, yielding a constant standard of quality.

Functional safety

Safety-orientated components, fitted as standard, allow high availability. The operator can thus concentrate fully on the task at hand, due to the integrated on-board electronics performing a constant balancing of pre-defined set data. Filtering of metallic filings by the magnetic rod, fitted in the hydraulic system as standard, increases life-expectancy of the hydraulic components and the oil.

Rugged attachments

Working attachment

The durable attachments have been designed for the toughest of applications. All components are optimised to the FEM methods and the hoist cylinders feature bearings on both sides.

Piping

The hydraulic lines are arranged optimally to safeguard against damage. The electric cabling is made with high-grade materials, thus guaranteeing a reliable supply to the consumer.



Liebherr hydraulic cylinders

- Specific size for each machine
- High-grade surface coating of the piston rods
- All Liebherr cylinders feature special long-life sealing systems
- Shock absorption at both sides in the working cylinders



Functional safety

- Essential operating data is stored and can be recalled at any time.
- Control and monitoring functions increase functional safety of the machine.
- Four fixed working modes for output discharge facilitate an effective and efficient operation:
 - Eco-Mode: for high output at big fuel savings
 - Power-Mode: for heavy-duty digging-and loading performance under severe conditions
 - Lift-Mode: for precise handling of heavy loads
 - Fine-Mode: for fine control at precision work



Large-sized cab

- Adjustable steering column
- Operator's seat, adjustable in height and can also be adapted to the individual weight of the operator.
- Consoles with or without possibility of horizontal adjustment.
- Large roof window
- Sun blinds



Comfort

The excavator operator is provided with an ergonomically-arranged working area within Liebherr hydraulic excavator cabs. All switches and functions are logically laid out, and operator's seat, steering column and consoles can be adjusted individually. Conditioning and concentration can thus be maintained throughout the entire working day, guaranteeing constant, maximum productivity of the operator.

Mobile comfort

Easy access

Wide steps, ergonomically-positioned handles and adjustable steering column allow an easy access into the Liebherr operator's cab.

Optimum visibility

A well-thought-out design of the uppercarriage, featuring large glass panels and rounded edges, increase overall visibility and guarantees a safe overview of the entire working area.

Pleasant surroundings

Reduced engine speed together with elaborate sound insulation, as well as optimised hydraulic components, allow a comfortable noise level both inside and out. The noise level is comparable with that of a diesel car.

Maintenance features

Easy maintenance

A central lubrication point for swing gear and main parts of the attachment.

Ease of operation

A shut-off valve, fitted to the hydraulic tank as standard, disconnects the system and guarantees ease of maintenance to the hydraulic system.

Easy access

Large maintenance flaps allow comfortable and safe access to all maintenance points.



Storage compartment – Everything has its place

- Sufficient storage space for a commercially-approved cooler box behind the operator's seat
- Drinks holder and storage compartment in operator's cab
- Large storage box behind the operator's cab
- Two standard tool boxes in the undercarriage



Fully-automatic air-conditioning system

- The air-conditioning system, fitted as standard, offers the same comfort as that of a regular car
- Two sensors for precise temperature regulation
- Ventilation flaps are controlled via keys
- Reheat function for quick dehumidifying / defrosting of the windshield



Hydrostatic fan drive

- Accelerated warm-up period
- Guaranteed constant oil quality as a result of constant oil temperature
- Increased life-expectancy of drive components
- The fan only runs at the output required, thus conserving fuel and reducing the noise level considerably



Economy

Liebherr offer a wide range of models, guaranteeing optimum suitability for every application. Easy access to components, as well as the proven service offer allows maintenance tasks to be performed in the shortest of times, thus reducing operating costs considerably.

Low operating costs

Liebherr engine

Maximum power of the engine is generated even when running at minimum speed. This allows the necessary output without limitation, whereby the torque which is available is ample for the level required, resulting high productivity with low consumption.

Automatic idle

If no working or travel movements are being performed, the shiftable function reduces the engine speed to idle, which in turn reduces fuel consumption and emission levels.

Liebherr Tool Control

Available as an option, immediately after the change-over of a hydraulic tool, the required pressure and oil flow values can be selected with a push of a button. Up to 10 combinations can be programmed. A tool changeover cannot be simpler and more time saving.

Investment for the future

Extensive service offer

Proven service offers assured by our service personnel trained directly at the manufacturing plants, and endorsed by our tight-knit network of dealers, provide services in all required areas. Direct contact to Liebherr is guaranteed via complete integration of all service points in our own Liebherr logistics system. Electronic access to our global spare-parts management allows a 98% availability of spare-parts 24 hours a day.

High resale values

Liebherr excavators are built with high-grade materials and quality production to provide a long-term operational life-span, thus guaranteeing maximum resale values.

Service-orientated

- The semi-automatic central lubrication system fitted as standard saves on time-consuming greasing
- Long filling intervals thanks to large fuel tank
- Consistently high performance thanks to series-production fuel cooling system



Modular quick-change system made by Liebherr

- Likufix – connects all hydraulically mounted tools without having to leave the operator's cab, maximum productivity due to tool change being performed in a matter of seconds
- The suitable digging tool for every application. Your machine is a multi-functional tool carrier and will pay for itself very quickly indeed.
- Mechanic and hydraulic Liebherr quick-change adapter

Technical Data



Engine

Rating per ISO 9249	143 hp (105 kW) at 1800 rpm
Model	Liebherr D 934 S according to level IIIA/Tier 3
Type	4 cylinder in-line
Bore/Stroke	4.8/5.4 in
Displacement	390 in ³
Engine operation	4-stroke diesel unit pump system turbo-charged and after-cooled reduced emissions
Cooling system	water-cooled and integrated motor oil cooler
Air cleaner	dry-type air cleaner with pre-cleaner, primary and safety elements
Fuel tank	93 gal
Engine idling	sensor controlled
Electrical system	
Voltage	24 V
Batteries	2 x 110 Ah/12 V
Alternator	three phase current 28 V/80 A



Hydraulic System

Hydraulic pump	Liebherr, variable displacement, swash plate double pump
Max. flow	2 x 50 gpm
Max. hydr. pressure	5,076 psi
Hydraulic pump regulation and control	Liebherr-Synchronic-Comfort-system (LSC) with electronic engine speed sensing regulation, pressure and flow compensation, load sensing and torque controlled swing drive priority
Hydraulic tank capacity	46 gal
Hydraulic system capacity	max. 85 gal
Filtration	one main return filter with integrated partial micro filtration (5 µm)
Cooling system	compact cooler, consisting of a water cooler, sandwiched with hydraulic oil cooler, fuel cooler and after-cooler cores and hydrostatically driven fan
Modes	can also be adjusted by the operator to adjust engine and hydraulic performance to match job conditions (Note: All modes provide full max. power)
LIFT	for precise lifting tasks
FINE	for precision work at high speed i.e. grading
ECO	for economic performance
POWER	for max. output
Super-Finish	additional operator adjustable work speed function for further increased feathering. Applies to all modes and all control functions
RPM adjustment	step less adjustment of engine output via rpm
Tool Control (Option)	ten pre-adjustable pump flows and pressures for add on tools



Hydraulic Controls

Power distribution	via control valve with integrated safety valves, simultaneous and independent operation of travel drive, swing drive and work
Control type	
Attachment and swing	proportional via joystick levers
Travel	proportional via foot pedal
Additional functions	via switch and/or proportional foot pedals



Swing Drive

Drive	Liebherr swash plate motor with torque control and integrated brake valve
Transmission	Liebherr compact planetary reduction gear
Swing ring	Liebherr sealed single race ball bearing swing ring, internal teeth
Swing speed	0–9.0 rpm
Swing torque	33,928 lbf ft
Holding brake	wet discs (spring applied – pressure released)
Option	pedal controlled positioning brake



Operator's Cab

Cab	resiliently mounted, sound insulated, tinted windows, front window stores overhead, door with sliding window
Operator's seat	fully adjustable, shock absorbing suspension, adjustable to operator's weight and size, 6-way adjustable Liebherr seat
Joysticks	integrated into adjustable seat consoles
Monitoring	menu driven query of current operating conditions via the LCD display. Automatic monitoring, display, warning (acoustical and optical signal) and saving machine data, for example, engine overheating, low engine oil pressure or low hydraulic oil level
Air conditioning	standard air conditioning, combined cooler/heater, additional dust filter in fresh air/recirculated
Noise emission	
ISO 6396	L_{pA} (inside cab) = 73 dB(A)
2000/14/EC	L_{WA} (surround noise) = 100 dB(A)
Sound level in correspondence with "Blue Angel" guidelines.	



Undercarriage

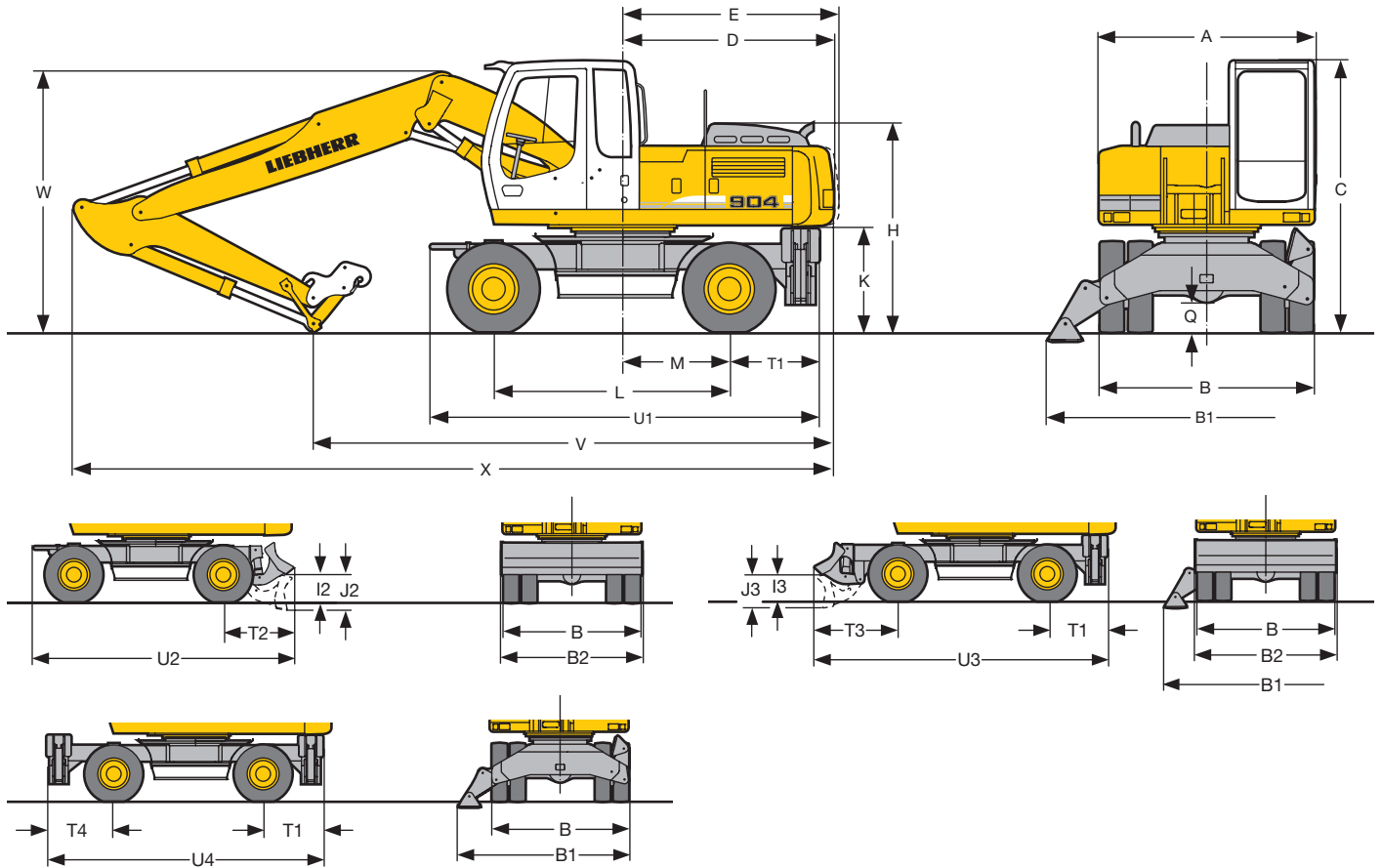
Drive	variable flow swash plate motor with automatic brake valve
Transmission	oversized two speed power shift transmission with additional creeper speed
Travel speed	0– 1.6 mph (creeper speed off road) 0– 3.1 mph (off road) 0– 5.6 mph (creeper speed on road) 0– 12.4 mph (road travel) 0– 18.6 mph Speeder (Option)
Axes	88,185 lb excavator axles; automatic or operator controlled front axle oscillation lock
Brakes	steering and rigid axle with wet, maintenance-free multi disc brakes with minimized backlash. Spring applied/pressure released parking brake integrated into gear box
Stabilization	stabilizing blade (adjustable during travel for dozing) 2-point outriggers stabilizing blade, front + 2 pt. outriggers, rear 4-point outriggers
Option	EW (extra wide gauge) undercarriage



Attachment

Hydraulic cylinders	Liebherr cylinders with special seal system. Shock absorption
Pivots	sealed, low maintenance
Lubrication	Liebherr semi-automatic central lubrication system
Bucket	standard equipped with 17,637 lb safety hook for lifting
Option	Liebherr quick change adapter

Dimensions



	ft in
A	8' 4"
B	8' 4"
B*	9'
B1	12' 1"
B2	8' 4"
B2*	9'
C	10' 4"
D	8' 1"
E	8' 3"
H	8' 1"
I2	1' 8"
I3	1' 7"
J2	2' 1"
J3	1' 10"
K	4' 1"
L	9'
M	4' 1"
Q	1' 2"
T1	3' 5"
T2	4' 2"
T3	5'
T4	3' 11"
U1	14' 10"
U2	15' 7"
U3	17' 5"
U4	16' 4"

* = EW-undercarriage
E = Tail radius

	ft in	Stick Hydr. Adjustable Boom 12'6"				Gooseneck Boom 17'5"			
		stabil. blade	2 pt. outr.	blade + 2 pt. outr.	4 pt. outr.	stabil. blade	2 pt. outr.	blade + 2 pt. outr.	4 pt. outr.
V	7'5"	20'	19'10"	21' 8"	19'10"	19'6"	19' 4"	21' 4"	20'2"
	8'	19' 8"	19' 6"	21' 4"	19' 6"	19'	18'10"	20'10"	19'8"
	8'8"	19' 2"	19'	20'12"	19'	18'8"	18' 6"	20' 4"	19'2"
W	10'	16' 5"	16' 3"	19' 8"	18' 6"	16'5"	16' 3"	18' 4"	17'3"
	7'5"	10' 6"	10' 6"	10' 6"	10' 6"	10'4"	10' 4"	10' 4"	10'4"
	8'	10' 6"	10' 6"	10' 6"	10' 6"	10'6"	10' 6"	10' 6"	10'6"
X	8'8"	10'10"	10'10"	10'10"	10'10"	10'8"	10' 8"	10' 8"	10'8"
	10'	10' 2"	10' 2"	10'12"	10'12"	10'2"	10' 2"	10' 8"	10'8"
	7'5"	29' 8"	29' 6"	31' 4"	29' 6"	29'8"	29' 6"	31' 4"	30'2"
Y	8'	29' 8"	29' 6"	31' 4"	29' 6"	29'8"	29' 6"	31' 4"	30'2"
	8'8"	29' 8"	29' 6"	31' 4"	29' 6"	29'8"	29' 6"	31' 6"	30'4"
	10'	29' 6"	29' 4"	31' 4"	30' 2"	29'6"	29' 4"	31' 6"	30'4"

Dimensions are with attachment over steering axle

Tires 10.00-20

Lift Capacities

with Hydr. Adjustable Boom 12'6"

Stick 7'5"

ft	Undercarriage	ft				ft in
		10 ft	15 ft	20 ft	25 ft	
25	Stabilizers raised					7,700* 7,700*
	Stabilizer blade down					7,700* 7,700*
	2 pt. outriggers down					7,700* 7,700*
	Blade + 2 pt. down					7,700* 7,700*
20	Stabilizers raised			6,800 10,600*		5,600 6,900*
	Stabilizer blade down			7,400 10,600*		6,100 6,900*
	2 pt. outriggers down			8,800 10,600*		6,900 6,900*
	Blade + 2 pt. down			10,600* 10,600*		6,900* 6,900*
15	Stabilizers raised		10,500 14,700*	6,900 11,200		4,400 6,700*
	Stabilizer blade down		11,400 14,700*	7,500 12,700*		4,900 6,700*
	2 pt. outriggers down		13,700 14,700*	9,000 12,700*		6,000 6,700*
	Blade + 2 pt. down		14,700* 14,700*	11,200 12,700*		6,700* 6,700*
10	Stabilizers raised		17,700 28,100*	10,000 16,800	4,200 7,400	3,800 6,800*
	Stabilizer blade down		19,600 28,100*	10,900 18,200*	4,600 10,000*	4,200 6,800*
	2 pt. outriggers down		24,300 28,100*	13,300 18,200*	8,900 14,100*	5,700 10,000*
	Blade + 2 pt. down		28,100* 28,100*	16,700 18,200*	11,000 14,100*	7,400 10,000*
5	Stabilizers raised		17,100 26,700*	9,800 16,600	4,000 7,300	3,600 6,600
	Stabilizer blade down		19,000 26,700*	10,800 21,200*	7,200 15,500*	4,400 12,500*
	2 pt. outriggers down		23,300 26,700*	12,900* 21,200*	9,600 15,500*	5,500 12,200
	Blade + 2 pt. down		26,700* 26,700*	16,400 21,200*	11,100 15,500*	7,300 12,500*
0	Stabilizers raised		17,200 32,300	9,600 16,800*	6,000 10,500	3,700 7,000
	Stabilizer blade down		19,100 32,400*	10,500 22,300*	6,600 16,200*	4,200 11,300*
	2 pt. outriggers down		24,000* 32,400*	12,900 22,300*	8,100 16,200*	5,200 11,300*
	Blade + 2 pt. down		31,100 32,400*	16,600 22,300*	10,500 16,200*	7,000 11,300*
-5	Stabilizers raised		18,100 33,300*	10,000 22,600*	6,100 16,500*	3,900 7,400
	Stabilizer blade down		19,200 33,300*	10,500 22,600*	6,100 16,500*	4,400 10,200*
	2 pt. outriggers down		23,100 33,300*	12,200 22,600*	7,500 16,500*	5,500 10,200*
	Blade + 2 pt. down		32,300 33,300*	16,300 22,600*	10,000 16,500*	7,400 10,200*
-10	Stabilizers raised		16,100 33,300*	8,300 15,600	5,100 9,700	4,900 9,300
	Stabilizer blade down		17,900 37,700*	9,200 18,200*	5,700 13,000*	5,500 11,900*
	2 pt. outriggers down		22,900 37,700*	11,500 22,800*	7,200 13,000*	6,900 11,900*
	Blade + 2 pt. down		32,100 37,700*	15,400 22,800*	9,600 13,000*	9,200 11,900*
-15	Stabilizers raised		15,400 24,200*			11,300 11,900*
	Stabilizer blade down		17,200 24,200*			11,600 18,200*
	2 pt. outriggers down		22,200 24,200*			13,000 18,200*
	Blade + 2 pt. down		24,200* 24,200*			16,400 18,200*

Stick 8'

ft	Undercarriage	ft				ft in
		10 ft	15 ft	20 ft	25 ft	
25	Stabilizers raised					7,000* 7,000*
	Stabilizer blade down					7,000* 7,000*
	2 pt. outriggers down					7,000* 7,000*
	Blade + 2 pt. down					7,000* 7,000*
20	Stabilizers raised			6,900 10,400*		5,200 6,300*
	Stabilizer blade down			7,500 10,400*		5,800 6,300*
	2 pt. outriggers down			8,900 10,400*		6,300* 6,300*
	Blade + 2 pt. down			10,400* 10,400*		6,300* 6,300*
15	Stabilizers raised		10,500 14,100*	6,800 11,300	4,200 6,700*	4,200 6,700*
	Stabilizer blade down		11,400 14,100*	7,500 12,300*	4,700 6,700*	4,600 6,100*
	2 pt. outriggers down		13,700 14,100*	9,000 12,300*	5,800 6,700*	5,700 6,100*
	Blade + 2 pt. down		14,100* 14,100*	11,200 12,300*	6,700* 6,700*	6,100* 6,100*
10	Stabilizers raised		18,000 27,900*	10,000 16,800*	4,200 7,500	3,600 6,200*
	Stabilizer blade down		20,300 27,900*	11,000 17,600*	4,600 10,600*	4,000 6,200*
	2 pt. outriggers down		24,400 27,900*	13,100 17,600*	8,700 13,800*	5,000 6,200*
	Blade + 2 pt. down		27,900* 27,900*	16,700 17,600*	11,000 13,800*	7,500 10,600*
5	Stabilizers raised		17,200 26,000*	9,500 16,400	4,000 7,300	3,400 6,300
	Stabilizer blade down		19,100 26,000*	10,500 20,800*	7,300 15,200*	4,500 12,400*
	2 pt. outriggers down		23,300 26,000*	12,800 20,800*	8,600 15,200*	5,500 12,400*
	Blade + 2 pt. down		26,000* 26,000*	16,200 20,800*	11,000 15,200*	7,300 12,400*
0	Stabilizers raised		17,300 31,700*	9,600 16,500	6,100 10,600	3,800 7,000
	Stabilizer blade down		19,200 31,700*	10,500 22,000*	6,700 10,600*	4,200 12,500*
	2 pt. outriggers down		23,500 31,700*	12,900 22,000*	8,200 10,600*	5,300 11,900
	Blade + 2 pt. down		31,200 31,700*	16,200 22,000*	10,600 16,000*	7,000 12,500*
-5	Stabilizers raised		16,200 32,800	9,000 16,500	5,500 10,600	3,700 7,100
	Stabilizer blade down		18,100 35,800*	9,900 22,500*	6,100 16,300*	4,100 9,100*
	2 pt. outriggers down		23,100 35,800*	12,300 22,500*	7,600 16,300*	5,200 9,100*
	Blade + 2 pt. down		32,000* 35,800*	16,200 22,500*	10,000 16,300*	7,100 9,100*
-10	Stabilizers raised		15,900 33,100	8,300 15,700	5,100 9,600	4,600 8,700*
	Stabilizer blade down		17,800 37,300*	9,200 18,200*	5,700 14,200*	5,100 11,600*
	2 pt. outriggers down		22,800 37,300*	11,500 23,100*	7,200 14,200*	6,400 11,600*
	Blade + 2 pt. down		31,900 37,300*	15,500 23,100*	9,600 14,200*	8,600 11,600*
-15	Stabilizers raised		15,300 27,600*			11,300 11,900*
	Stabilizer blade down		17,100 27,600*			11,600 18,200*
	2 pt. outriggers down		22,100 27,600*			13,000 18,200*
	Blade + 2 pt. down		27,600* 27,600*			16,400 18,200*

Stick 8'8"

ft	Undercarriage	ft				ft in
		10 ft	15 ft	20 ft	25 ft	
25	Stabilizers raised					6,400* 6,400*
	Stabilizer blade down					6,400* 6,400*
	2 pt. outriggers down					6,400* 6,400*
	Blade + 2 pt. down					6,400* 6,400*
20	Stabilizers raised			6,900 10,000*		4,900 5,800*
	Stabilizer blade down			9,000 10,000*		4,900 5,800*
	2 pt. outriggers down			10,000* 10,000*		5,800* 5,800*
	Blade + 2 pt. down			10,000* 10,000*		5,800* 5,800*
15	Stabilizers raised		10,500 12,700*	6,800 11,200	4,300 7,600	3,900 5,600*
	Stabilizer blade down		10,500 12,700*	6,800 11,200	4,300 7,600	3,900 5,600*
	2 pt. outriggers down		12,700* 12,700*	8,900 11,900*	5,800 7,800*	5,400 5,600*
	Blade + 2 pt. down		12,700* 12,700*	11,200* 11,900*	7,600 7,800*	5,600* 5,600*
10	Stabilizers raised		18,000 26,300*	9,800 16,500	4,300 7,500	3,400 5,700*
	Stabilizer blade down		19,800 26,300*	10,800 17,000*	4,900 7,500	3,400 5,700*
	2 pt. outriggers down		24,400 26,300*	13,200 17,000*	8,800 13,400*	5,800 7,000*
	Blade + 2 pt. down		26,300* 26,300*	16,600 17,000*	10,900 13,400*	7,500 7,000*
5	Stabilizers raised		17,300 25,300*	9,600 16,500	4,100 7,400	3,200 6,000*
	Stabilizer blade down		19,200 25,300*	10,600 16,500	4,700 7,400	3,200 6,000*
	2 pt. outriggers down		23,400 25,300*	12,900 16,500	6,700 12,100*	4,500 6,000*
	Blade + 2 pt. down		25,300* 25,300*	16,200 16,500	8,800 12,200*	6,000* 6,000*
0	Stabilizers raised		17,400 30,600*	9,600 16,500	3,800 7,100	3,200 6,200
	Stabilizer blade down		19,300 30,600*	10,600 16,500	4,400 7,100	3,200 6,200
	2 pt. outriggers down		23,700 30,600*	13,000 22,000*	5,300 11,900	4,600 6,800*
	Blade + 2 pt. down		30,600* 30,600*	16,300 22,000*	7,100 12,500*	6,200 6,800*
-5	Stabilizers raised		16,200 32,800	9,000 16,500	5,600 10,200	3,500 6,800
	Stabilizer blade down		18,200 35,800*	9,900 22,500*	6,100 16,300*	4,100 9,100*
	2 pt. outriggers down		23,200 35,800*	12,300 22,500*	7,600 16,300*	5,200 9,100*
	Blade + 2 pt. down		31,600 35,800*	16,200 22,500*	10,100 16,300*	8,000 9,100*
-10	Stabilizers raised		15,800 33,000*	8,400 15,800	5,100 9,600	4,300 8,100
	Stabilizer blade down		17,700 36,900*	9,300 16,500	5,700 12,100*	4,900 8,100
	2 pt. outriggers down		22,700 36,900*	11,600 23,000*	7,200 14,900*	6,000 11,000*
	Blade + 2 pt. down		31,800 36,900*	15,600 23,000*	9,600 14,900*	8,100 11,000*
-15	Stabilizers raised		15,200 30,500*	8,000 15,200		6,900 11,900*
	Stabilizer blade down		17,100 30,500*	8,000 15,200		6,900 11,900*
	2 pt. outriggers down		22,000 30,500*	11,100 15,400*		9,600 11,900*
	Blade + 2 pt. down		30,500* 30,500*	15,400* 15,400*		11,900* 11,900*

Stick 10'

ft	Undercarriage	ft				ft in
		10 ft	15 ft	20 ft	25 ft	
25	Stabilizers raised			6,800 7,100*		5,400* 5,400*
	Stabilizer blade down			7,100* 7,100*		5,400* 5,400*
	2 pt. outriggers down			7,100* 7,100*		5,400* 5,400*
	Blade + 2 pt. down			7,100* 7,100*		5,400* 5,400*
20	Stabilizers raised			7,000 9,100*		4,400 4,900*
	Stabilizer blade down			7,600 9,100*		4,900 4,900*
	2 pt. outriggers down			9,000 9,100*		4,900* 4,900*
	Blade + 2 pt. down			9,100* 9,100*		4,900* 4,900*
15	Stabilizers raised		6,800 10,400*	4,500 7,700	3,600 4,700*	3,600 4,700*
	Stabilizer blade down		7,400 10,400*	4,900 8,300*	4,000 4,700*	4,000 4,700*
	2 pt. outriggers down		9,000 10,400*	6,000 8,300*	4,700* 4,700*	4,700* 4,700*
	Blade + 2 pt. down		10,400* 10,400*	7,700 8,300*	4,700* 4,700*	4,700* 4,700*
10	Stabilizers raised		18,200 23,200*	10,100 15,800*	4,600 10,900	3,100 4,800*
	Stabilizer blade down		20,200 23,200*	11,100 15,800*	5,200 12,000*	3,500 4,800*
	2 pt. outriggers down		23,200* 23,200*	13,200* 15,800*	8,700 12,700*	5,900 10,400*
	Blade + 2 pt. down		23,200* 23,200*	15,800* 15,800*	10,800 12,700*	7,600 10,400*
5	Stabilizers raised		17,100 27,700*	9,400 16,400	4,200 7,000	2,900 5,100*
	Stabilizer blade down		19,000 27,700*	10,400 16,400	4,700 11,800*	3,300 5,100*
	2 pt. outriggers down		23,500 27,700*	12,700 16,400	6,700 12,100*	4,200 5,100*
	Blade + 2 pt. down		27,700* 27,700*	16,100 16,400	9,000 12,100*	5,700 11,800*
0	Stabilizers raised		17,000 28,600*	9,400 16,200	3,900 7,200	2,900 5,600*
	Stabilizer blade down		19,000 28,600*	10,400 17,000*	4,400 12,000*	3,300 5,600*
	2 pt. outriggers down		23,300 28,600*	12,700 17,000*	5,400 12,000*	4,200 5,600*
	Blade + 2 pt. down		28,600* 28,600*	16,000 21,700*	8,000 12,000*	

Lift Capacities

with Hydr. Adjustable Boom 12'6" EW-Undercarriage

Stick 7'5"

ft	Undercarriage	10 ft	15 ft	20 ft	25 ft	ft in
25	Stabilizers raised Stabilizer blade down 2 pt. outriggers down					7,700* 7,700* 7,700* 7,700* 17' 4"
20	Stabilizers raised Stabilizer blade down 2 pt. outriggers down			7,400 10,600* 8,200 10,600* 9,200 10,600*		6,100 6,900* 6,800 6,900* 6,900* 6,900* 21'10"
15	Stabilizers raised Stabilizer blade down 2 pt. outriggers down		11,400 14,700* 12,700 14,700* 14,300 14,700*	7,500 11,300 8,300 12,700*		4,900 6,700* 5,400 6,700* 6,300 6,700* 24' 6"
10	Stabilizers raised Stabilizer blade down 2 pt. outriggers down	19,600 28,100* 22,200 28,100* 25,400 28,100*	10,900 16,900 12,200 18,200*	7,400 11,200 8,200 14,100*	4,600 7,500 5,200 10,000*	4,200 6,800* 4,800 6,800* 5,500 6,800* 25'10"
5	Stabilizers raised Stabilizer blade down 2 pt. outriggers down	19,000 26,700* 21,700 26,700* 24,800 26,700*	10,800 16,700 12,900 21,200*	7,200 11,200* 7,900 15,500*	4,400 7,300 5,000 12,500*	4,000 6,700 4,500 7,300* 5,200 7,300* 26' 2"
0	Stabilizers raised Stabilizer blade down 2 pt. outriggers down	19,100 32,400* 21,700 32,400* 24,900 32,400*	10,500 16,800* 11,800 22,300* 13,500 22,300*	6,700 10,600 7,400 16,200*	4,200 7,100 4,700 11,300*	4,000 6,800 4,600 8,300* 5,300 8,300* 25' 6"
- 5	Stabilizers raised Stabilizer blade down 2 pt. outriggers down	18,100 33,400* 20,700 36,300* 24,600 36,300*	10,000 16,600 11,200 22,600*	6,100 10,100 6,800 16,500*		4,400 7,500 5,000 10,200* 5,900 10,200* 23' 9"
- 10	Stabilizers raised Stabilizer blade down 2 pt. outriggers down	17,900 33,600* 20,500 37,700* 24,400 37,700*	9,200 15,800 10,400 22,800*	5,700 9,800 6,500 13,000*		5,500 9,400 6,200 11,900* 7,300 11,900* 20' 6"
- 15	Stabilizers raised Stabilizer blade down 2 pt. outriggers down	17,200 34,200* 19,800 34,200* 23,600 34,200*				13,000 18,200* 14,800 18,200* 17,400 18,200* 11'11"

Stick 8'

ft	Undercarriage	10 ft	15 ft	20 ft	25 ft	ft in
25	Stabilizers raised Stabilizer blade down 2 pt. outriggers down					7,000* 7,000* 7,000* 7,000* 18' 4"
20	Stabilizers raised Stabilizer blade down 2 pt. outriggers down			7,500 10,400* 8,200 10,400* 9,300 10,400*		5,800 6,300* 6,300* 6,300* 6,300* 6,300* 22' 8"
15	Stabilizers raised Stabilizer blade down 2 pt. outriggers down		11,400 14,100* 12,700 14,100* 14,100* 14,100*	7,500 11,300* 8,300 12,300*	4,700 6,700* 5,300 6,700*	4,600 6,100* 5,200 6,100* 6,000 6,100* 25' 2"
10	Stabilizers raised Stabilizer blade down 2 pt. outriggers down	20,000 27,900* 21,900 27,900* 25,500 27,900*	11,000 16,900 12,200 17,600*	7,200 11,100 8,000 13,800*	4,700 7,600 5,200 10,600*	4,000 6,200* 4,500 6,200* 5,300 6,200* 26' 6"
5	Stabilizers raised Stabilizer blade down 2 pt. outriggers down	19,100 26,000* 21,700 26,000* 24,800 26,000*	10,500 16,500 11,700 20,800*	7,300 11,000* 8,000 15,200*	4,500 7,400 5,000 12,400*	3,800 6,400 4,300 6,600* 5,000 6,600* 26'10"
0	Stabilizers raised Stabilizer blade down 2 pt. outriggers down	19,200 31,700* 21,800 31,700* 25,000 31,700*	10,600 16,600 11,800 22,200*	6,700 10,700 7,500 16,000*	4,200 7,100 4,800 12,500*	3,800 6,500 4,300 7,500* 5,100 7,500* 26' 2"
- 5	Stabilizers raised Stabilizer blade down 2 pt. outriggers down	18,100 33,100* 20,600 35,800* 24,600 35,800*	9,900 16,600 11,200 22,500*	6,100 10,200 6,900 16,300*		4,200 7,100 4,700 9,100* 5,500 9,100* 24' 5"
- 10	Stabilizers raised Stabilizer blade down 2 pt. outriggers down	17,800 33,400* 20,400 37,300* 24,300 37,300*	9,300 15,800 10,500 23,100*	5,700 9,700 6,500 14,200*		5,100 8,800 5,800 11,600* 6,800 11,600* 21' 4"
- 15	Stabilizers raised Stabilizer blade down 2 pt. outriggers down	17,100 34,200* 19,700 34,200* 23,500 34,200*				9,400 14,000* 10,600 14,000* 12,500 14,000* 14' 6"

Stick 8'8"

ft	Undercarriage	10 ft	15 ft	20 ft	25 ft	ft in
25	Stabilizers raised Stabilizer blade down 2 pt. outriggers down					6,400* 6,400* 6,400* 6,400* 19' 3"
20	Stabilizers raised Stabilizer blade down 2 pt. outriggers down			7,600 10,000* 8,300 10,000* 9,400 10,000*		5,400 5,800* 5,800* 5,800* 5,800* 5,800* 23' 5"
15	Stabilizers raised Stabilizer blade down 2 pt. outriggers down		11,400 12,700* 12,700 12,700*	7,400 11,300 8,200 11,900*	4,800 7,700 5,300 7,800*	4,400 5,600* 4,900 5,600* 5,600* 5,600* 25'10"
10	Stabilizers raised Stabilizer blade down 2 pt. outriggers down	20,000 26,300* 22,300 26,300* 25,600 26,300*	10,800 17,000* 12,100 17,000* 13,700 17,000*	7,300 11,000 8,100 13,400*	4,700 7,600 5,300 10,800*	3,800 5,700* 4,300 5,700* 5,100 5,700* 27' 2"
5	Stabilizers raised Stabilizer blade down 2 pt. outriggers down	19,200 25,300* 21,000 25,300* 24,900 25,300*	10,500 16,600 11,800 20,400*	7,200 11,000 8,000 15,000*	4,500 7,400 5,100 12,200*	3,600 6,000* 4,100 6,000* 4,800 6,000* 27' 6"
0	Stabilizers raised Stabilizer blade down 2 pt. outriggers down	19,300 30,600* 21,600 30,600* 24,500 30,600*	10,600 16,600 11,800 22,000*	6,900 10,800 7,700 15,900*	4,200 7,100 4,800 12,500*	3,600 6,200 4,100 6,800* 4,800 6,800* 26'10"
- 5	Stabilizers raised Stabilizer blade down 2 pt. outriggers down	18,100 32,800* 20,600 35,400* 24,600 35,400*	9,900 16,600 11,200 22,300*	6,200 10,200* 7,000 16,200*	4,000 6,900 4,500 8,900*	3,900 6,800 4,500 8,100* 5,300 8,100* 25' 2"
- 10	Stabilizers raised Stabilizer blade down 2 pt. outriggers down	17,700 33,300* 20,200 36,900* 24,100 36,900*	9,300 15,900 10,500 23,000*	5,700 9,700 6,500 14,900*		4,800 8,200 5,400 11,000* 6,400 11,000* 22' 2"
- 15	Stabilizers raised Stabilizer blade down 2 pt. outriggers down	17,100 30,500* 19,600 30,500* 23,500 30,500*	8,900 15,400 10,100 15,400*			7,700 11,900* 8,700 11,900* 10,200 11,900* 16' 5"

Stick 10'

ft	Undercarriage	10 ft	15 ft	20 ft	25 ft	ft in
25	Stabilizers raised Stabilizer blade down 2 pt. outriggers down					7,100* 7,100* 7,100* 7,100* 21' 1"
20	Stabilizers raised Stabilizer blade down 2 pt. outriggers down			7,600 9,100* 8,400 9,100* 9,100* 9,100*		4,900 4,900* 4,900* 4,900* 4,900* 4,900* 24'11"
15	Stabilizers raised Stabilizer blade down 2 pt. outriggers down		7,400 10,400* 8,200 10,400*	4,900 7,800 5,500 8,300*	4,000 4,700* 4,500 4,700*	4,000 4,700* 4,700* 4,700* 27' 3"
10	Stabilizers raised Stabilizer blade down 2 pt. outriggers down	20,200 23,200* 22,500 23,200* 23,200* 23,200*	11,100 15,800* 12,300* 15,800*	7,200 11,100 8,000 12,700*	4,900 7,700 5,400 10,400*	3,500 4,800* 4,000 4,800* 4,700 4,800* 28' 6"
5	Stabilizers raised Stabilizer blade down 2 pt. outriggers down	19,000 27,700* 21,600 27,700* 24,700 27,700*	10,400 16,500 11,600 19,500*	7,100 10,800 7,900 14,400*	4,700 7,500 5,300 11,800*	3,300 5,100* 3,800 5,100* 4,400 5,100* 28' 9"
0	Stabilizers raised Stabilizer blade down 2 pt. outriggers down	18,900 28,600* 21,200 28,600* 24,800 28,600*	10,400 16,300 11,600 21,700*	6,900 10,900 7,700 15,600*	4,400 7,200 4,900 12,300*	3,300 5,600* 3,800 5,600* 4,400 5,600* 28' 2"
- 5	Stabilizers raised Stabilizer blade down 2 pt. outriggers down	18,200 32,500* 20,700 34,200* 24,700 34,200*	10,000 16,700 11,200 22,100*	6,400 10,300 7,200 15,900*	4,000 6,900 4,600 12,000*	3,500 6,200 4,100 6,600* 4,800 6,600* 26' 6"
- 10	Stabilizers raised Stabilizer blade down 2 pt. outriggers down	17,600 33,200* 20,100 36,400* 24,000 36,400*	9,600 16,200 10,800 22,700*	5,800 9,800 6,500 15,800*		4,200 7,300 4,800 8,600* 5,700 8,600* 23' 9"
- 15	Stabilizers raised Stabilizer blade down 2 pt. outriggers down	17,200 32,700* 19,700 34,700* 23,600 34,700*	8,800 15,400 10,000 19,200*			5,900 10,100* 6,700 10,100* 7,900 10,100* 19' 2"

Height Can be slewed through 360° In longitudinal position of undercarriage Max. reach * Limited by hydr. capacity

The lift capacities on the load hook of the Liebherr quick-change adapter 48 without grab attachment are stated in pounds (lb) and are valid on a firm, level supporting surface with blocked oscillating axle. These capacities can be slewed through 360° with the undercarriage in the transverse position. Capacities in the longitudinal position of the undercarriage (+/- 15°) are specified over the steering axle with the stabilizers raised and over the rigid axle with the stabilizers down. The values apply when the adjusting cylinder is in the optimal position. Indicated loads comply with the ISO 10567 standard and do not exceed 75% of tipping or 87% of hydraulic capacity, or are limited by the permissible load of the load hook on the quick-change adapter (max. 26,455 lb). Without the quick-change adapter, lift capacities will increase by up to 498 lb.

Lift Capacities

with Gooseneck Boom 17'5"

Stick 7'5"

ft	Undercarriage	10 ft	15 ft	20 ft	25 ft	ft in
25	Stabilizers raised					6,500* 6,500*
	Stabilizer blade down					6,500* 6,500*
20	Stabilizers raised			6,700 9,500*		5,800 5,900*
	Stabilizer blade down			7,300 9,500*		5,900 5,900*
15	Stabilizers raised			6,400 10,900*		4,500 5,700*
	Stabilizer blade down			7,000 10,900*		5,000 5,700*
10	Stabilizers raised	16,200 26,400*	9,200 15,900*	6,000 10,500*	4,100 7,400	3,900 6,000*
	Stabilizer blade down	23,000 26,400*	12,400 15,900*	8,000 12,700*	5,600 8,600*	5,400 6,000*
5	Stabilizers raised		8,200 15,400	5,500 10,000	3,900 7,100	3,700 6,500*
	Stabilizer blade down		9,100 19,900*	6,100 14,600*	4,400 11,100*	4,100 6,500*
0	Stabilizers raised	13,600* 13,600*	7,700 14,700	5,200 9,600	3,800 7,000	3,700 6,900
	Stabilizer blade down	13,600* 13,600*	8,500 22,100*	5,800 15,900*	4,200 9,400*	4,100 7,500*
-5	Stabilizers raised	13,700 22,000*	7,500 14,500	5,100 9,500	3,700 7,000	3,700 7,500*
	Stabilizer blade down	15,500 22,000*	8,400 22,400*	5,400 10,500*	3,800 7,000	3,700 7,500*
-10	Stabilizers raised	20,200 22,000*	10,600 22,400*	7,100 16,300*	4,500 9,600*	4,500 9,600*
	Stabilizer blade down	22,000* 22,000*	14,400 22,400*	9,100 16,300*	5,700 9,600*	5,700 9,600*
-15	Stabilizers raised	14,100 30,300*	7,600 14,700	5,200 9,600	3,700 7,000	3,700 9,400*
	Stabilizer blade down	15,900 30,300*	8,500 20,600*	5,800 14,700*	4,200 9,400*	4,100 14,400*

Stick 8'

ft	Undercarriage	10 ft	15 ft	20 ft	25 ft	ft in
25	Stabilizers raised					5,900* 5,900*
	Stabilizer blade down					5,900* 5,900*
20	Stabilizers raised			6,700 9,600*		5,300* 5,300*
	Stabilizer blade down			7,300 9,600*		5,300* 5,300*
15	Stabilizers raised			6,500 10,500*		4,700 5,200*
	Stabilizer blade down			7,000 10,500*		5,200* 5,200*
10	Stabilizers raised	16,600 24,500*	9,300 15,300*	6,000 10,500*	4,100 7,400	3,700 5,400*
	Stabilizer blade down	23,400 24,500*	12,500 15,300*	8,000 12,200*	5,600 9,500*	5,400 6,000*
5	Stabilizers raised		8,200 15,400	5,500 10,000	3,900 7,100	3,500 5,900*
	Stabilizer blade down		9,100 19,400*	6,100 14,200*	4,300 11,900*	3,900 5,900*
0	Stabilizers raised	13,500 13,800*	7,600 14,700	5,100 9,600	3,700 6,900	3,500 6,500
	Stabilizer blade down	13,800* 13,800*	8,500 21,800*	5,700 15,700*	4,100 9,500*	3,900 6,700*
-5	Stabilizers raised	13,600 21,100*	7,400 14,400	5,000 9,500	3,700 7,000	3,500 7,200
	Stabilizer blade down	15,300 21,100*	8,300 22,400*	5,500 16,200*	4,000 9,400*	4,300 8,400*
-10	Stabilizers raised	20,000 21,100*	10,500 22,400*	7,000 16,200*	4,500 9,600*	5,400 8,400*
	Stabilizer blade down	21,100* 21,100*	14,300 22,400*	9,300 16,200*	5,700 9,600*	7,200 8,400*
-15	Stabilizers raised	13,900 30,100*	7,500 14,500	5,100 9,600	3,700 7,000	4,700 8,800
	Stabilizer blade down	15,600 31,000*	8,400 20,900*	5,700 15,000*	4,200 9,400*	5,300 12,400*

Stick 8'8"

ft	Undercarriage	10 ft	15 ft	20 ft	25 ft	ft in
25	Stabilizers raised					5,400* 5,400*
	Stabilizer blade down					5,400* 5,400*
20	Stabilizers raised			6,800 9,100*		4,900* 4,900*
	Stabilizer blade down			7,400 9,100*		4,900* 4,900*
15	Stabilizers raised			6,500 10,000*	4,300 6,500*	4,100 4,800*
	Stabilizer blade down			7,100 10,000*	4,700 6,500*	4,500 4,800*
10	Stabilizers raised	17,000 22,600*	9,300 14,600*	6,000 10,500*	4,100 7,400	3,600 4,800*
	Stabilizer blade down	18,900 22,600*	10,300 14,600*	8,000 11,800*	4,600 9,900*	4,000 4,900*
5	Stabilizers raised		8,300 15,500	5,500 10,000	3,900 7,100	3,300 5,300*
	Stabilizer blade down		9,200 18,800*	6,100 13,900*	4,300 11,600*	3,700 5,300*
0	Stabilizers raised	13,400 14,000*	7,600 14,700	5,100 9,500	3,700 6,900	3,300 6,100*
	Stabilizer blade down	14,000* 14,000*	8,500 21,500*	5,700 15,500*	4,100 12,400*	3,700 6,100*
-5	Stabilizers raised	13,400 20,300*	7,300 14,400	5,000 9,300	3,600 6,800	3,600 6,800
	Stabilizer blade down	15,200 20,300*	8,200 22,300*	5,500 16,100*	4,100 7,500*	4,100 7,500*
-10	Stabilizers raised	19,800 20,300*	10,400 22,300*	6,900 16,100*	4,500 7,500*	4,500 7,500*
	Stabilizer blade down	20,300* 20,300*	14,200 22,300*	9,300 16,100*	6,800 7,500*	6,800 7,500*
-15	Stabilizers raised	13,700 29,700*	7,400 14,400	5,000 9,400	4,400 8,300	4,400 8,300
	Stabilizer blade down	15,500 29,700*	8,300 21,100*	5,500 15,300*	4,900 10,600*	4,900 10,600*

Stick 10'

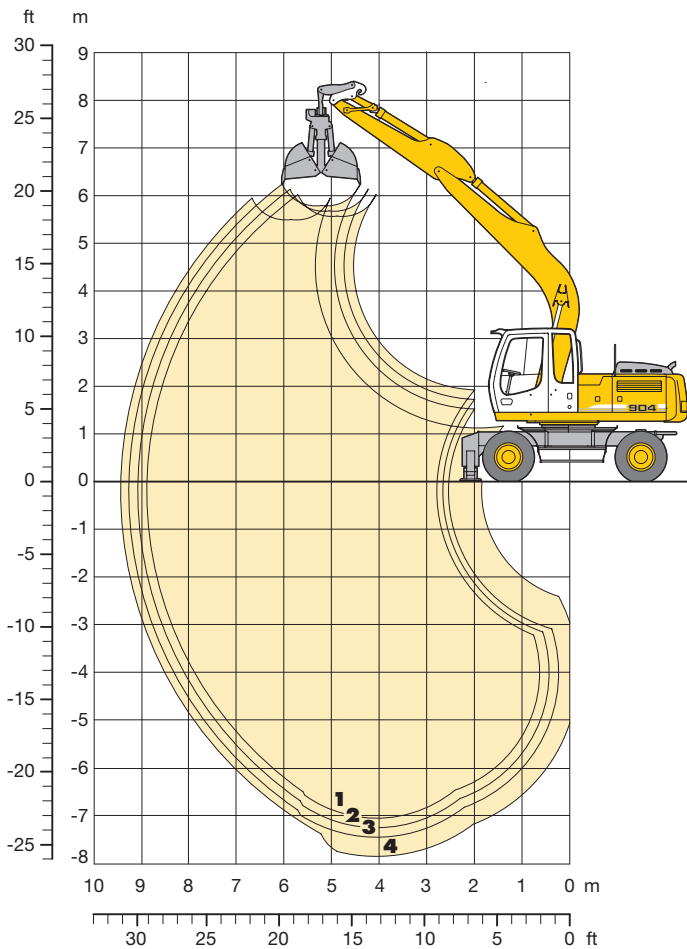
ft	Undercarriage	10 ft	15 ft	20 ft	25 ft	ft in
25	Stabilizers raised					4,500* 4,500*
	Stabilizer blade down					4,500* 4,500*
20	Stabilizers raised			6,800 9,100*		4,100* 4,100*
	Stabilizer blade down			7,200 9,100*		4,100* 4,100*
15	Stabilizers raised			6,500 10,000*	4,300 6,500*	4,100 4,800*
	Stabilizer blade down			7,100 10,000*	4,700 6,500*	4,500 4,800*
10	Stabilizers raised	17,800 19,100*	9,600 13,200*	6,100 10,600*	4,100 7,400	3,300 4,100*
	Stabilizer blade down	19,100* 19,100*	10,200 13,200*	8,100 11,000*	5,600 9,900*	4,100 4,100*
5	Stabilizers raised		8,400 15,600	5,500 10,000	3,900 7,100	3,300 4,400*
	Stabilizer blade down		9,300 17,700*	6,100 13,200*	4,300 11,100*	3,400 4,400*
0	Stabilizers raised	13,400 14,500*	7,600 14,700	5,100 9,500	3,700 6,900	3,300 6,000*
	Stabilizer blade down	14,500* 14,500*	8,500 20,900*	5,700 15,000*	4,100 12,000*	3,400 5,000*
-5	Stabilizers raised	13,200 19,100*	7,200 14,300	4,800 9,200	3,500 6,700	3,500 6,000*
	Stabilizer blade down	15,000 19,100*	8,100 22,100*	5,400 15,900*	3,900 11,700*	3,700 6,000*
-10	Stabilizers raised	19,100 19,100*	10,300 22,100*	6,800 15,900*	5,000 11,500	4,600 6,000*
	Stabilizer blade down	19,100* 19,100*	14,100 22,100*	9,200 15,900*	6,700 11,700*	6,000 6,000*
-15	Stabilizers raised	13,400 26,700*	7,200 14,200	4,800 9,200	4,400 8,300	3,900 7,400
	Stabilizer blade down	15,200 26,700*	8,100 21,500*	5,400 15,000*	4,900 10,600*	4,300 8,100*

Height
 Can be slewed through 360°
 In longitudinal position of undercarriage
 Max. reach
 * Limited by hydr. capacity

The lift capacities on the load hook of the Liebherr quick-change adapter 48 without grab attachment are stated in pounds (lb) and are valid on a firm, level supporting surface with blocked oscillating axle. These capacities can be slewed through 360° with the undercarriage in the transverse position. Capacities in the longitudinal position of the undercarriage (+/- 15°) are specified over the steering axle with the stabilizers raised and over the rigid axle with the stabilizers down. Indicated loads comply with the ISO 10567 standard and do not exceed 75 % of tipping or 87 % of hydraulic capacity, or are limited by the permissible load of the load hook on the quick-change adapter (max. 26,455 lb). Without the quick-change adapter, lift capacities will increase by up to 498 lb.

Clamshell Attachment

with Gooseneck Boom 17'5"



Digging Envelope with Quick Change Adapter

		1	2	3	4
Stick length	ft in	7'5"	8'	8'8"	10'
Max. digging depth	ft in	23'2"	23'9"	24'5"	25' 9"
Max. reach at ground level	ft in	29'	29'8"	30'4"	30'10"
Max. dumping height	ft in	18'3"	18'8"	19'	18' 1"

Clamshell Model

10 B

Max. tooth force	16,411 lbf (16,314 lb)
Max. torque of hydr. swivel	1,298 lbf ft

Operating Weight

The operating weight includes the basic machine with 8 tires plus spacer rings, gooseneck boom 17'5", stick 8', quick change adapter 48 and clamshell model 10 B/0.59 yd³.

Undercarriage versions	Weight
A 904 C Litronic with stabilizer blade	41,900 lb
A 904 C Litronic with 2 pt. outriggers	41,900 lb
A 904 C Litronic with stabilizer blade + 2 pt. outriggers	45,200 lb
A 904 C Litronic with 4 pt. outriggers	45,400 lb
A 904 C EW Litronic with stabilizer blade	42,350 lb
A 904 C EW Litronic with 2 pt. outriggers	42,100 lb

Clamshell Model 10 B Machine stability per ISO 10567* (75% of tipping capacity)

Width of shells in	Capacity yd ³	Weight lb	Stabilizers raised				Stabilizer blade down				2 point outriggers down				Stabilizer blade + 2 pt. outr. down				4 point outriggers down				EW stabilizers raised				EW stabilizer blade down				EW 2 point outriggers down			
			Stick length (ft in)				Stick length (ft in)				Stick length (ft in)				Stick length (ft in)				Stick length (ft in)				Stick length (ft in)				Stick length (ft in)				Stick length (ft in)			
			7'5"	8'	8'8"	10'	7'5"	8'	8'8"	10'	7'5"	8'	8'8"	10'	7'5"	8'	8'8"	10'	7'5"	8'	8'8"	10'	7'5"	8'	8'8"	10'	7'5"	8'	8'8"	10'	7'5"	8'	8'8"	10'
12.6 ¹⁾	0.22	1,698	□	□	□	□	□	□	□	□	□	□	□	□	□	□	□	□	□	□	□	□	□	□	□	□	□	□	□	□	□	□	□	□
15.7 ¹⁾	0.29	1,808	□	□	□	□	□	□	□	□	□	□	□	□	□	□	□	□	□	□	□	□	□	□	□	□	□	□	□	□	□	□	□	□
23.6 ¹⁾	0.46	1,896	□	□	□	□	□	□	□	□	□	□	□	□	□	□	□	□	□	□	□	□	□	□	□	□	□	□	□	□	□	□	□	□
31.5 ¹⁾	0.59	2,006	□	□	□	□	□	□	□	□	□	□	□	□	□	□	□	□	□	□	□	□	□	□	□	□	□	□	□	□	□	□	□	□
39.4 ¹⁾	0.78	2,138	□	△	△	■	□	□	□	□	□	□	□	□	□	□	□	□	□	□	□	□	□	□	□	□	□	□	□	□	□	□	□	□
39.4 ¹⁾	1.31	2,293	▲	▲	▲	▲	■	▲	▲	▲	△	△	△	■	□	□	△	■	□	□	△	■	■	■	▲	▲	■	■	■	■	□	□	△	■
12.6 ²⁾	0.22	1,808	□	□	□	□	□	□	□	□	□	□	□	□	□	□	□	□	□	□	□	□	□	□	□	□	□	□	□	□	□	□	□	□
15.7 ²⁾	0.29	1,940	□	□	□	□	□	□	□	□	□	□	□	□	□	□	□	□	□	□	□	□	□	□	□	□	□	□	□	□	□	□	□	□
23.6 ²⁾	0.46	2,094	□	□	□	□	□	□	□	□	□	□	□	□	□	□	□	□	□	□	□	□	□	□	□	□	□	□	□	□	□	□	□	□
31.5 ²⁾	0.59	2,227	□	□	□	□	□	□	□	□	□	□	□	□	□	□	□	□	□	□	□	□	□	□	□	□	□	□	□	□	□	□	□	□

* Indicated loads are based on ISO 10567 and do not exceed 75% of tipping or 87% of hydraulic capacity, max. stick length without quick change adapter, lifted 360° on firm with blocked oscillating axle

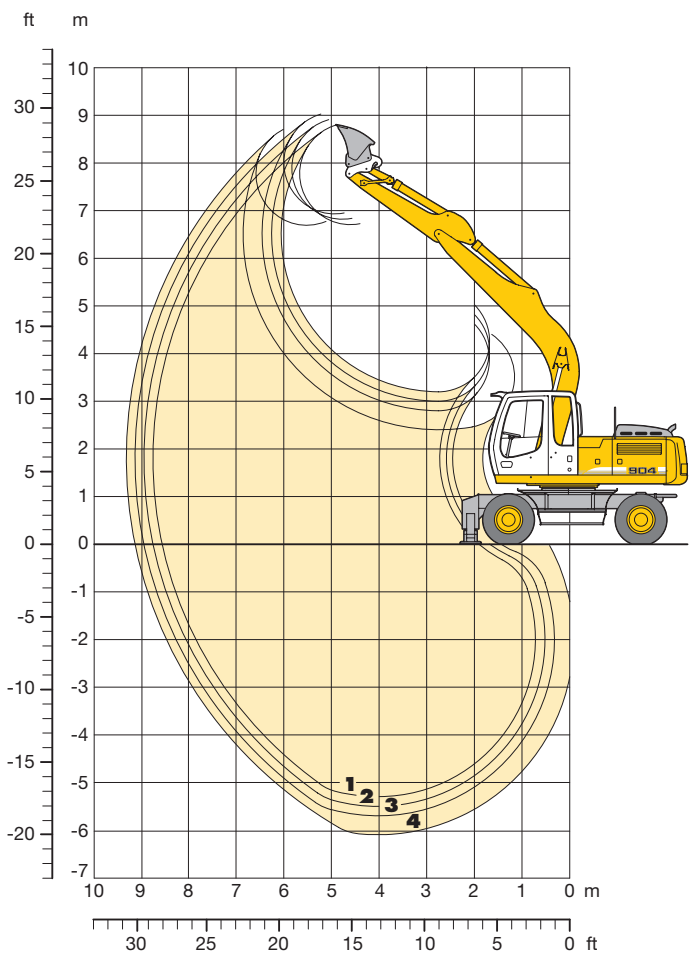
1) without ejector

2) with ejector

Max. material weight □ = ≤ 3,034 lb/yd³, △ = ≤ 2,528 lb/yd³, ■ = ≤ 2,023 lb/yd³, ▲ = -

Ditchcleaning Attachment

with Gooseneck Boom 17'5"



Digging Envelope with Quick Change Adapter

		1	2	3	4
Stick length	ft in	7' 5"	8'	8' 8"	10'
Max. digging depth	ft in	17' 5"	18' 1"	18' 8"	20'
Max. reach at ground level	ft in	28' 3"	28' 10"	29' 4"	30'
Max. dumping height	ft in	21' 12"	22' 6"	22' 10"	21' 12"
Max. teeth height	ft in	28' 10"	29' 4"	29' 8"	28' 7"

Operating Weight

The operating weight includes the basic machine with 8 tires plus spacer rings, gooseneck boom 17'5", stick 8', quick change adapter 48 and ditchcleaning bucket 78.7"/0.92 yd³.

Undercarriage versions	Weight
A 904 C Litronic with stabilizer blade	41,700 lb
A 904 C Litronic with 2 pt. outriggers	41,700 lb
A 904 C Litronic with stabilizer blade + 2 pt. outriggers	45,000 lb
A 904 C Litronic with 4 pt. outriggers	45,200 lb
A 904 C EW Litronic with stabilizer blade	42,100 lb
A 904 C EW Litronic with 2 pt. outriggers	41,900 lb

Ditchcleaning Buckets Machine stability per ISO 10567* (75% of tipping capacity)

Cutting width in	Capacity ISO 7451 ¹⁾ yd ³	Weight lb	Stabilizers raised		Stabilizer blade down				2 point outriggers down				Stabilizer blade + 2 pt. outr. down				4 point outriggers down				EW stabilizers raised				EW stabilizer blade down				EW 2 point outriggers down					
			Stick length (ft in)		Stick length (ft in)		Stick length (ft in)		Stick length (ft in)		Stick length (ft in)		Stick length (ft in)		Stick length (ft in)		Stick length (ft in)		Stick length (ft in)		Stick length (ft in)		Stick length (ft in)		Stick length (ft in)		Stick length (ft in)		Stick length (ft in)					
			7'5"	8'	8'8"	10'	7'5"	8'	8'8"	10'	7'5"	8'	8'8"	10'	7'5"	8'	8'8"	10'	7'5"	8'	8'8"	10'	7'5"	8'	8'8"	10'	7'5"	8'	8'8"	10'	7'5"	8'	8'8"	10'
59.1"	0.65	882	□	□	□	□	□	□	□	□	□	□	□	□	□	□	□	□	□	□	□	□	□	□	□	□	□	□	□	□	□			
78.7"	0.92	1,102	□	□	□	△	□	□	□	□	□	□	□	□	□	□	□	□	□	□	□	□	□	□	□	□	□	□	□	□	□			
94.5"	1.11	1,301	△	△	■	■	□	△	△	△	□	□	□	□	□	□	□	□	□	□	□	△	△	△	□	□	□	□	□	□	□			
63.0 ²⁾	1.05	1,698	△	△	■	■	□	△	△	■	□	□	□	□	□	□	□	□	□	□	□	△	△	■	□	□	□	□	□	□	□			
63.0 ²⁾	1.31	1,764	■	▲	▲	▲	■	■	■	▲	□	△	□	■	□	□	□	□	□	□	□	■	■	■	▲	△	△	■	■	□	□	■		
78.7 ²⁾	0.92	1,786	△	△	△	■	□	□	□	△	□	□	□	□	□	□	□	□	□	□	□	△	△	□	□	□	□	□	□	□	□			
78.7 ²⁾	1.31	1,918	■	▲	▲	▲	■	■	■	▲	□	△	□	■	□	□	□	□	□	□	□	△	△	■	■	■	▲	△	△	■	■	□	□	■

* Indicated loads are based on ISO 10567 and do not exceed 75% of tipping or 87% of hydraulic capacity, max. stick length without quick change adapter, lifted 360° on firm with blocked oscillating axle

¹⁾ comparable with SAE (heaped)

²⁾ with 2 x 50° rotator

□ = ≤ 3,034 lb/yd³ max. material weight

△ = ≤ 2,528 lb/yd³ max. material weight

■ = ≤ 2,023 lb/yd³ max. material weight

▲ = -

Equipment



Undercarriage

	S	O
Two circuit travel brake with accumulator	•	
Travel motor protection		•
Outrigger cylinder rod guards	•	
Creeper speed electrically switchable from cab	•	
New tires	•	
Service free parking brake	•	
Independent outrigger control		•
Choice of tires		•
Auto check valve directly on each stabilizer cylinder	•	
Proportional power steering with mechanical back up	•	
Customized colors		•
Two lockable storage boxes	•	
Lockable storage box additional		•
Two-speed power shift transmission	•	



Uppercarriage

	S	O
Electric fuel tank filler pump		•
Maintenance-free swing brake lock	•	
Handrails, Non slip surfaces	•	
Main switch for electric circuit	•	
Engine hood with lift assistance	•	
Pedal controlled positioning swing brake		•
Reverse travel warning system		•
Sound insulation	•	
Customized colors		•
Pin lock upper/lower	•	
Maintenance-free HD-batteries	•	
Extended tool kit		•
Lockable tool box	•	
Tool kit	•	



Hydraulics

	S	O
Hydraulic tank shut-off valve	•	
Extra hydr. control for hydr. swivel	•	
Pressure compensation	•	
Hook up for pressure checks	•	
Pressure storage for controlled lowering of attachments with engine turned off	•	
Filter with partial micro filtration (5 µm)	•	
Electronic pump regulation	•	
Step less mode system (ECO)	•	
Flow compensation	•	
Four mixed modes, can also be adjusted	•	
Full flow micro filtration		•
Bio degradable hydraulic oil		•
Pressure compensation		•
Flow summation		•
Tool Control	•	
Additional hydraulic circuits		•



Engine

	S	O
Turbo charger	•	
Unit pump system	•	
Cold start aid		•
Sensor controlled engine idling	•	
Air filter with pre-cleaner main- and safety element	•	

S = Standard, O = Option

Options and/or special attachments, supplied by vendors other than Liebherr, are only to be installed with the knowledge and approval of Liebherr to retain warranty.

All illustrations and data may differ from standard equipment. Subject to change without notice.



Operator's Cab

	S	O
Storage tray	•	
Displays for engine operating condition	•	
Mechanical hour meters, readable from outside the cab	•	
Roof hatch	•	
Adjustable roof vent		•
6-way adjustable seat	•	
Air pressure operator seat with heating and head-rest		•
Seat and consoles independently adjustable	•	
Extinguisher		•
Removable customized foot mat	•	
Dome light	•	
Cab heater with defroster	•	
Coat hook	•	
Air conditioning	•	
Cooler		•
Adjustable steering wheel	•	
Bullet proof window (fixed installation – can not be opened)		•
Radio stereo		•
Radio installation		•
Rain hood over front window opening	•	
Beacon		•
Tinted windows	•	
Door with sliding window	•	
Optical and acoustical warning if outriggers are not fully retracted		•
Auxiliary heating		•
Sun shade		•
Sun blinds	•	
Electronic theft protection		•
Wiper blades		•
Cigarette lighter and ashtray	•	
Additional flood lights		•



Attachment

	S	O
Flood lights on boom	•	
Hydr. lines for clam operation		•
Sealed pivots	•	
Safety lift hook on hoe buckets	•	
Liebherr line of clams		•
Liebherr semi-automatic central lubrication system	•	
Liebherr fully-automatic central lubrication system		•
Likufix		•
Safety check valves on hoist cylinder	•	
Safety check valves on stick cylinder		•
Hose quick connection		•
Hydraulic or manual quick change tool adapter		•
Customized colors		•
Special buckets and other tools		•
Overload warning device		•
Two way valves for bucket/clam use		•
Locking of connections for clam operation		•
Cylinders with shock absorber	•	

The Liebherr Group of Companies

Wide product range

The Liebherr Group is one of the largest construction equipment manufacturers in the world. Liebherr's high-value products and services enjoy a high reputation in many other fields, too. The wide range includes domestic appliances, aerospace and transportation systems, machine tools and maritime cranes.

Exceptional customer benefit

Every product line provides a complete range of models in many different versions. With both its technical excellence and acknowledged quality, Liebherr products offer a maximum of customer benefits in practical application.

State-of-the-art technology

To provide consistent, top quality products, Liebherr attaches great importance to each product area, its components and core technologies. Important modules and components are developed and manufactured in-house, for instance the entire drive and control technology for construction equipment.

Worldwide and independent

Hans Liebherr founded the Liebherr family company in 1949. Since that time, the enterprise has steadily grown to a Group of 100 companies with over 30,000 employees located on all continents. The corporate headquarters of the Group is Liebherr-International AG in Bulle, Switzerland. The Liebherr family is the sole owner of the company.

www.liebherr.us



Printed in Germany by Geiselmann RG-BK-RP LHB/VF 10472024-1.5-02.08

Liebherr Construction Equipment Co.

4100 Chestnut Avenue, Newport News, VA 23607, USA

☎ (757) 245 5251, Fax (757) 928 8701

www.liebherr.us, E-Mail: info.lce@liebherr.com